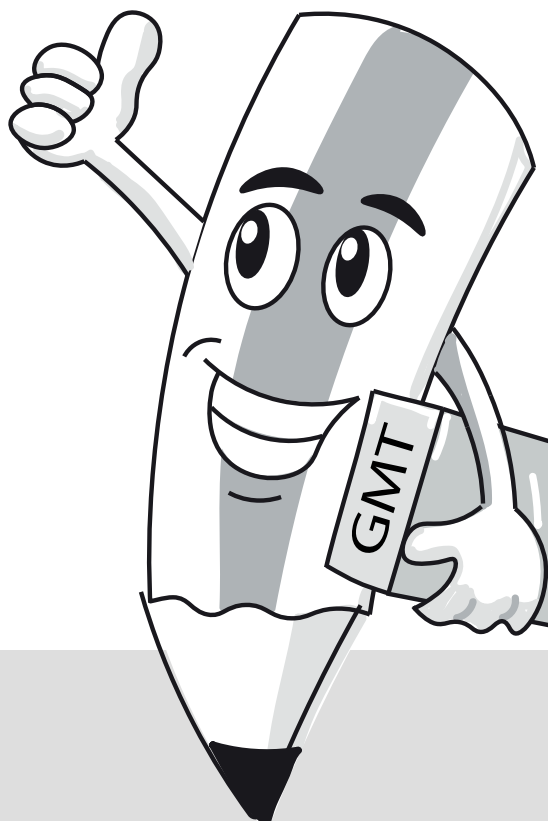


# GRAPHICAL MIDI TOOLS

for Sibelius®

## How to Install *GUIDE*



# How To Install

Congratulations on acquiring **GRAPHICAL MIDI TOOLS** (GMT) – plugin for Sibelius! Follow these easy steps to get GMT up and running.

Before installing GMT, please close Sibelius.

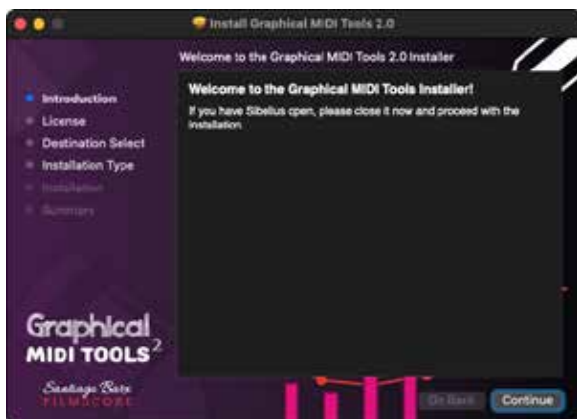
## Step 1: Run the installer

---

a. Run the **Graphical MIDI Tools Installer** application found in the downloaded .DMG (Mac) or .ZIP (PC) file.

- **On Mac:** double click on the **Graphical MIDI Tools.pkg** to run the package installer.
- **On Windows/PC:** double click on **Graphical MIDI Tools installer.exe** to run the setup wizard.

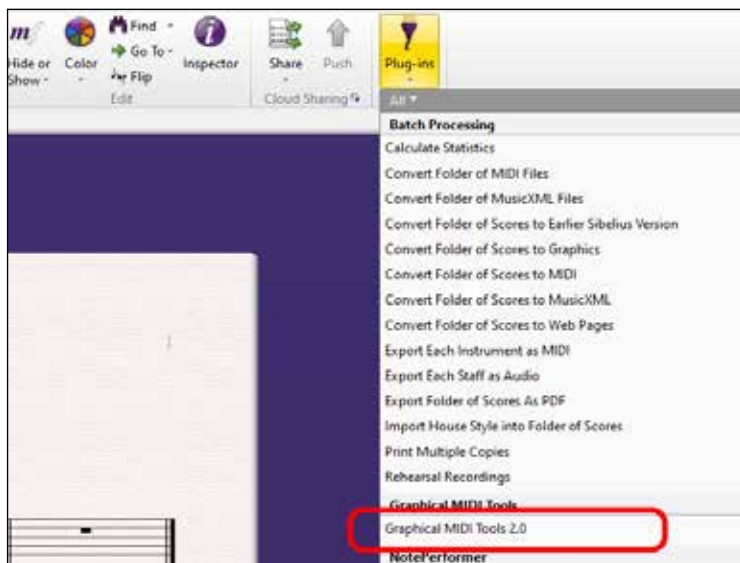
Complete the package installer (Mac) or setup wizard (PC):



*The GMT package installer (Mac)*

b. Once the installer process is completed, open Sibelius.

You should see the “Graphical MIDI Tools 2” option added to the “Plug-ins” menu (in the “Home” tab).



*The Graphical MIDI Tools 2 Option in the Plug-ins menu*

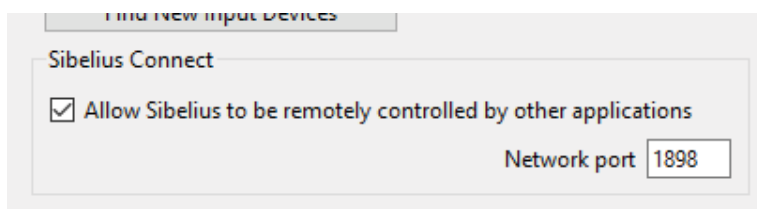
## Step 2: Enable Sibelius Connect (only for Sibelius 2024.3 and later)

---

If you are using Sibelius 2024.3 or higher, you need to enable the **Sibelius Connect** feature to allow GMT to communicate with Sibelius..

To do so go to File > Preferences.

- Select the Input Devices category
- Search for the Sibelius Connect section and tick “Allow Sibelius to be remotely controlled by other applications”
- Leave the Network port to its default value (1898)



### Recommended: Assign a keyboard shortcut for faster usage

With the Sibelius Connect feature enabled, GMT is ready to work. While you can run GMT from the menus, we highly recommend assigning a **keyboard shortcut** for a faster and smoother experience.

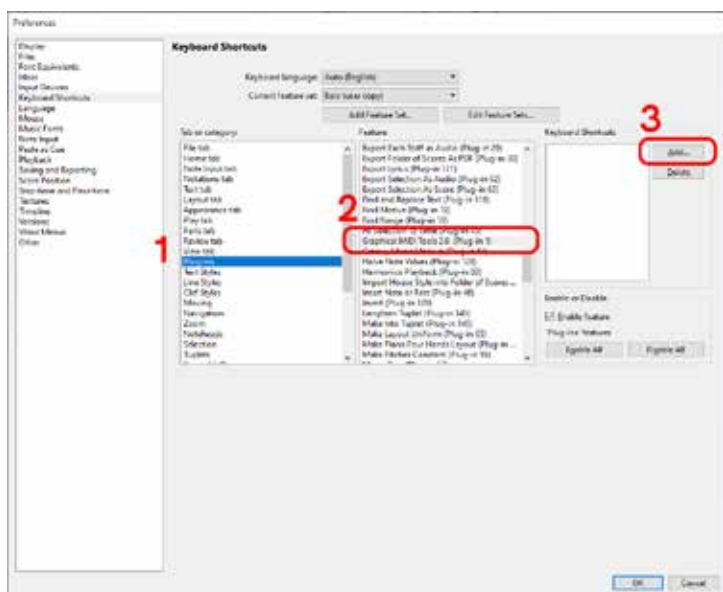
Follow the instructions in the next step to set up a shortcut.

## Step 2.b Assigning a Keyboard shortcut (required for Sibelius versions prior to 2024.3)

If you are using an earlier version of Sibelius, GMT will use its legacy communication method, which requires **assigning a keyboard shortcut** to the plugin.

To do this:

a. In Sibelius, go to File > Preferences. On the left column select “Keyboard Shortcuts”. You should see the following dialog:



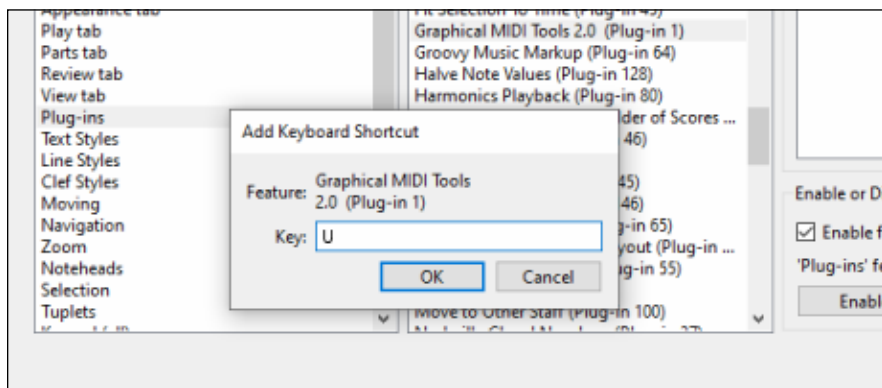
- (1) In “Tab or Category” choose “Plug-ins”.
- (2) In "Features" search for the option “Graphical MIDI Tools 2”.
- (3) Click on the “Add...” button.

**Notice:** If this is the first keyboard shortcut you add, Sibelius will ask you to create a new “shortcuts set”, since the “Standard” set cannot be overridden. Click “Yes” and indicate a name for the shortcut set (for example “My shortcuts”)



## b. Choose a shortcut key.

**IMPORTANT:** The shortcut key must be a single key and **not a combination**. Using modifiers (SHIFT, CONTROL or ALT) is not allowed, because these are reserved for GMT functionality.

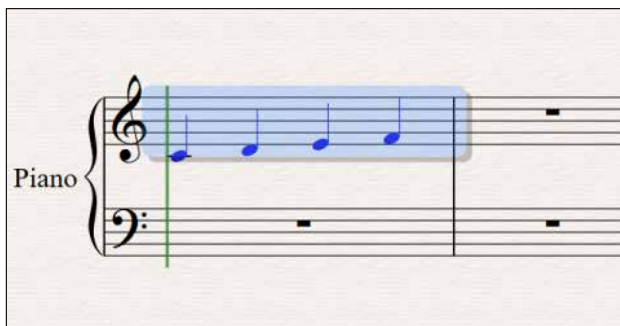


In this example, we use the “U” key, which is unused in Sibelius, but you can choose the one that fits you best.

# First Run and Activation

Once you have assigned a keyboard shortcut, you are ready to run GMT. This plugin works on a bar basis, to launch it:

- a. Select one or more measures from a staff of the score



- b. Press the plugin shortcut key (e.g. "U"). The GMT activation window will appear, prompting you to activate GMT, use the Lite edition, or start a free 15 day trial.



# Activating GMT

.....

To unlock GMT:

1. Select Activate Now in GMT's Activation Center
2. Enter your email and License Activation Code.
3. Click Activate.



## Offline Activation (optional)

Alternatively, you can use the offline activation option if your computer is not connected to the internet. Click on the “Offline Activation” button. A **key file** (which contains your license information) will be required.





To obtain a license file, follow these steps:

1. Using a computer with an internet connection visit:  
  
[www.graphicalmiditools.com/offline](http://www.graphicalmiditools.com/offline)
2. Enter your email and license activation code.
3. Your **machine ID** will be required. The machine ID is displayed in the white box in the Offline Activation window.
4. Download the key file and save it to a portable storage device (e.g., USB drive).
5. Load the file using the “Load Key File” button.

## GMT's Welcome Window

On success, the GMT welcome window will appear. Press “Continue”.

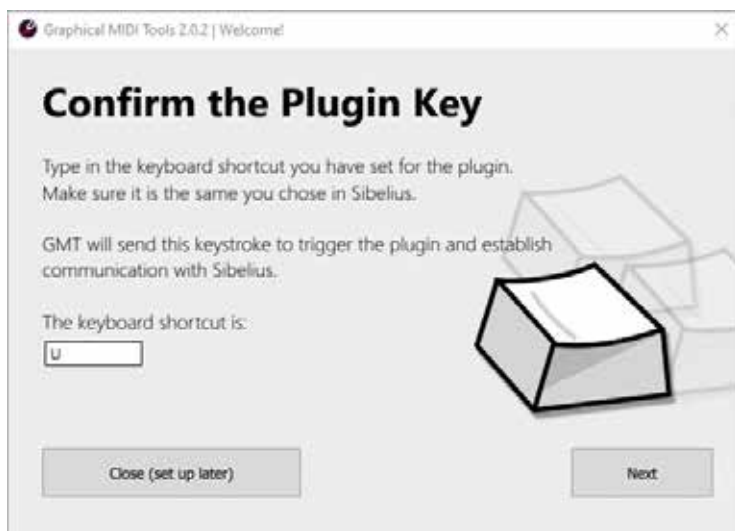


## Confirming the Keyboard Shortcut (only for Sibelius versions prior to 2024.3)

.....

Only for users on Sibelius versions prior to 2024.3, which lack the Sibelius Connect feature, GMT will prompt you to specify the shortcut key assigned to the plugin.

Ensure that you enter the exact shortcut key you configured in Sibelius.



Press “Next”. GMT will ask you to perform a test to check that the plugin key is correctly set and communication with Sibelius can be established.

Press “Test the Plugin key” to start the test.

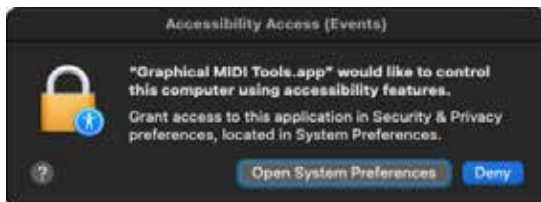


### Understanding how GMT works

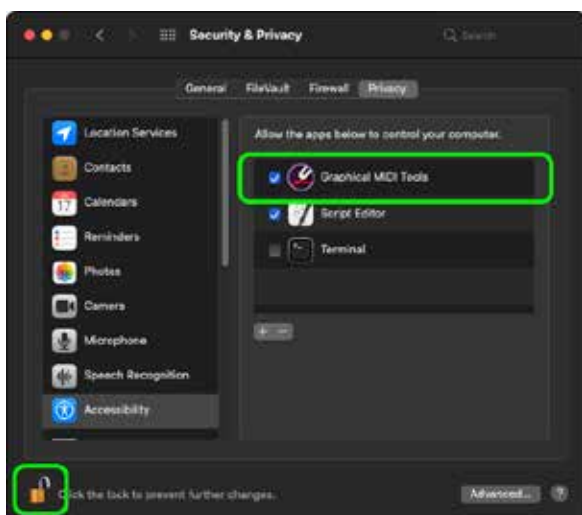
GMT simulates a key stroke and sends it to Sibelius every time it needs to connect with it (to send and receive information). By triggering the "Manuscript plugin" both applications can communicate between each other.

### For Mac users: Granting permissions

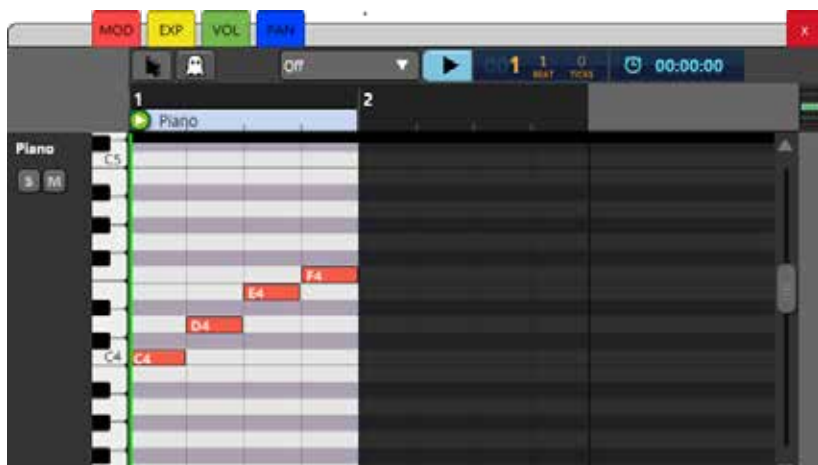
If you are on MacOS version 10.15 (Catalina) or higher, a System Preferences dialog will appear asking you to grant permissions to the application. This is needed by GMT for the sole purpose of sending the key event.



In the system preferences, click on the lock (at the bottom left), then check the "Graphical MIDI Tools" item on the list.



After testing the key, press “Done” and you are all set. The GMT Piano Roll window should appear.



## What's next?

---


Now you can start working with GMT and create great MIDI mockups inside Sibelius!

To get the latest news and documentation, we recommend you visit our official website:

**[WWW.GRAPHICALMIDITOLS.COM](http://WWW.GRAPHICALMIDITOLS.COM)**

We also recommend having a look at the User's Manual, included in the downloaded .DMG / .ZIP file.

For examples and tutorials I invite you to join me on Instagram

 [instagram.com/santiagobarxmusic](https://www.instagram.com/santiagobarxmusic)

## Issues while installing? Reach out!

---

If you encounter any issues while setting up GMT, please don't hesitate to contact support at:

[support@graphicalmiditools.com](mailto:support@graphicalmiditools.com)



(This page intentionally left blank)

*Santiago Barx*  
FILMSCORE

# GRAPHICAL MIDI TOOLS

for Sibelius®

**FOLLOW ME ON INSTAGRAM  
FOR GMT EXAMPLES AND TUTORIALS**

 /santiagobarxmusic

**WWW.GRAPHICALMIDITOLS.COM**

